



Short communication

Synthesising bushmeat research effort in West and Central Africa: A new regional database



G. Taylor^{a,1}, J.P.W. Scharlemann^{b,c,*}, M. Rowcliffe^d, N. Kumpel^d, M.B.J. Harfoot^c, J.E. Fa^e, R. Melisch^f, E.J. Milner-Gulland^g, S. Bhagwat^a, K.A. Abernethy^{h,i}, A.S. Ajonina^j, L. Albrechtsen^k, S. Allebone-Webb^g, E. Brown^l, D. Brugiere^m, C. Clarkⁿ, M. Colell^o, G. Cowlshaw^d, D. Crookes^{g,p}, E. De Merode^d, J. Dupain^{l,q,r}, T. East^g, D. Edderai^s, P. Elkan^{ag}, D. Gill^{g,t}, E. Greengrass^t, C. Hodgkinson^t, O. Ilambu^u, P. Jeanmart^v, J. Juste^w, J.M. Linder^x, D.W. Macdonald^k, A.J. Noss^y, P.U. Okorie^z, V.J.J. Okouyi^{aa}, S. Pailler^{ab}, J.R. Poulsenⁿ, M. Riddell^{ac}, J. Schleicher^{ac,ad}, B. Schulte-Herbrüggen^{ad,c}, M. Starkey^{ad}, N. van Vliet^{ae}, C. Whitham^g, A.S. Willcox^{af}, D.S. Wilkie^{ag}, J.H. Wright^{d,g}, L.M. Coad^{ac,*}

^a School of Geography and the Environment, University of Oxford, South Parks Road, Oxford OX1 3QY, UK

^b School of Life Sciences, University of Sussex, Brighton BN1 9QG, UK

^c United Nations Environment Programme World Conservation Monitoring Centre, 219 Huntingdon Road, Cambridge CB3 0DL, UK

^d Institute of Zoology, Zoological Society of London, Regent's Park, London NW1 4RW, UK

^e Durrell Wildlife Conservation Trust, Les Augrès Manor, Trinity, Jersey JE3 5BP, Channel Islands, UK

^f TRAFFIC International, 219A Huntingdon Road, Cambridge CB3 0DL, UK

^g Division of Biology, Imperial College London, Silwood Park Campus, Ascot, Berkshire SL5 7PY, UK

^h African Forest Ecology Group, School of Natural Sciences, University of Stirling, Stirling FK9 4LA, UK

ⁱ Institut de Recherche en Ecologie Tropicale, CENAREST, BP 842, Libreville, Gabon

^j Department of Environmental Science, University of Buea, Cameroon

^k Wildlife Conservation Research Unit (WildCRU), University of Oxford, Tubney House, Abingdon Road, Abingdon OX13 5QL, UK

^l Wildlife Conservation Society, Okapi Faunal Reserve, The Democratic Republic of Congo

^m SECA-BRLi Consulting Company, 1105 av P. Mendes-France, BP 4001, 30001 Nîmes cedex, France

ⁿ Nicholas School of the Environment, Duke University, P.O. Box 90328, Durham, NC 27709, USA

^o Department of Psychiatry and Clinical Psychobiology, Faculty of Psychology, Campus Mundet, University of Barcelona, 08036 Barcelona, Spain

^p Department of Economics, University of Pretoria, Private bag X20, Hatfield 0028, South Africa

^q Center for Research and Conservation, Royal Zoological Society of Antwerp, Koningin Astridplein 26, 2018 Antwerp, Belgium

^r African Wildlife Foundation, Boulevard du 30 juin No. 2515, Immeuble AFORIA, B.P. 2396, Gombe, Kinshasa, The Democratic Republic of Congo

^s Projet Développement d'Alternatives au Braconnage en Afrique Centrale, BP 2572, Yaounde, Cameroon

^t Fauna and Flora International, Jupiter House, Station Road, Cambridge CB1 2JD, UK

^u WWF Central Africa Regional Programme Office (CARPO), 4, Av. Sergeant Moke, (Concession SAFRICAS), Commune de Ngaliema, Kinshasa, The Democratic Republic of Congo

^v Precious Woods Gabon, BP 2262 Quartier Batterie IV, Libreville, Gabon

^w Estación Biológica de Doñana, Consejo Superior de Investigaciones Científicas, Apdo 1056, 41013 Sevilla, Spain

^x Department of Sociology and Anthropology, James Madison University, MSC 7501, Harrisonburg, VA 22807, USA

^y Department of Geography, University of Florida, 3141 Turlington Hall, P.O. Box 117315, Gainesville, FL 32611-7315, USA

^z Department of Animal and Environmental Biology, Imo State University, P.M.B. 2000, Owerri, Imo State, Nigeria

^{aa} Institut de Recherches sur l'Écologie Tropicale, BP 13354, Gabon

^{ab} Economics Department, Clark University, 950 Main St., Worcester, MA 01610, USA

^{ac} Environmental Change Institute, School of Geography, University of Oxford, Oxford OX1 3QY, UK

* Corresponding authors at: School of Life Sciences, University of Sussex, Brighton BN1 9QG, UK. Tel.: +44 (0)1273 873502 (J.P.W. Scharlemann). Environmental Change Institute, School of Geography, University of Oxford, Oxford OX1 3QY, UK. Tel.: +44 (0)1223 363835 (L.M. Coad).

E-mail addresses: gemma.taylor.14@ucl.ac.uk (G. Taylor), j.scharlemann@sussex.ac.uk (J.P.W. Scharlemann), Marcus.Rowcliffe@ioz.ac.uk (M. Rowcliffe), noelle.kumpel@zsl.org (N. Kumpel), Mike.Harfoot@unep-wcmc.org (M.B.J. Harfoot), John.Fa@durrell.org (J.E. Fa), Roland.Melisch@wwf.de (R. Melisch), e.j.milner-gulland@imperial.ac.uk (E.J. Milner-Gulland), shonil.bhagwat@open.ac.uk (S. Bhagwat), k.a.abernethy@stir.ac.uk (K.A. Abernethy), saajonina@yahoo.com (A.S. Ajonina), lise.albrechtsen@gmail.com (L. Albrechtsen), allebonewebb@yahoo.co.uk (S. Allebone-Webb), Ellen@proforest.net (E. Brown), dmc-brugiere@yahoo.fr (D. Brugiere), connie.j.clark@duke.edu (C. Clark), mcolell@ub.edu (M. Colell), Guy.Cowlshaw@ioz.ac.uk (G. Cowlshaw), d_crookes@hotmail.com (D. Crookes), emmanuel@gorilla.cd (E. De Merode), jdupain@awf.org (J. Dupain), tamsyneast@gmail.com (T. East), davidedderai@hotmail.fr (D. Edderai), pelkan@uuplus.com (P. Elkan), David.Gill@fauna-flora.org (D. Gill), ejgreengrass@yahoo.co.uk (E. Greengrass), Chloe.Hodgkinson@fauna-flora.org (C. Hodgkinson), oilambu@wwfcarpo.org (O. Ilambu), philippe.jeanmart@preciouswoods.com (P. Jeanmart), juste@ebd.csi.ces (J. Juste), linderjm@jmu.edu (J.M. Linder), david.macdonald@zoo.ox.ac.uk (D.W. Macdonald), andrew.noss@scbbs-bo.com (A.J. Noss), puokorie@yahoo.com (P.U. Okorie), okouyi_joseph@yahoo.fr (V.J.J. Okouyi), sharonpailler@gmail.com (S. Pailler), jpoulsen@duke.edu (J.R. Poulsen), mike.riddell@brdt.org (M. Riddell), schleicher.judith@gmail.com (J. Schleicher), bjorn.schulte-herbruggen@su.se (B. Schulte-Herbrüggen), malcolm.starkey@thebiodiversityconsultancy.com (M. Starkey), vanvlietnathalie@yahoo.com (N. van Vliet), charlotte.whitham@gmail.com (C. Whitham), awillcox@ufl.edu (A.S. Willcox), dwilkie@wcs.org (D.S. Wilkie), juliet.wright@ioz.ac.uk (J.H. Wright), lauren.coad@ouce.ox.ac.uk (L.M. Coad).

¹ Current address: University College London, Gower Street, London WC1E 6BT, UK.

^{ad} Department of Geography, University of Cambridge, Downing Place, Cambridge CB2 3EN, UK

^{ae} Center for International Forestry Research, Jalan CIFOR, Situ Gede, Sindang Barang, Bogor (Barat) 16115, Indonesia

^{af} Department of Forestry, Wildlife and Fisheries, University of Tennessee, 274 Ellington Plant Sciences Building, Knoxville, TN 37996, USA

^{ag} Wildlife Conservation Society, 2300 Southern Boulevard, Bronx, New York, NY 10460, USA

ARTICLE INFO

Article history:

Received 28 May 2014

Received in revised form 1 November 2014

Accepted 3 November 2014

Keywords:

Conservation

Hunting

Exploitation

Wild meat

ABSTRACT

Unsustainable hunting threatens both biodiversity and local livelihoods. Despite high levels of research effort focused on understanding the dynamics of bushmeat trade and consumption, current research is largely site specific. Without synthesis and quantitative analysis of available case studies, the national and regional characteristics of bushmeat trade and consumption remain largely speculative, impeding efforts to inform national and regional policy on bushmeat trade. Here we describe the structure and content of the West and Central African bushmeat database which holds quantitative data on bushmeat sales, consumption and offtake for 177 species from 275 sites across 11 countries in two regions, spanning three decades of research. Despite this wealth of available data, we found important biases in research effort. The majority of studies in West and Central Africa have collected market data, which although providing a useful record of bushmeat sales, are limited in their ability to track changes in hunting offtake. In addition, few data exist for West Africa, and few studies have tracked changes over time, using repeat sampling. With new initiatives in the regions to track bushmeat hunting, this database represents an opportunity to synthesise current and future data on bushmeat hunting, consumption and trade in West and Central Africa, identify gaps in current understanding, and systematically target future monitoring efforts.

© 2014 Elsevier Ltd. All rights reserved.

1. Introduction

In tropical forests worldwide, hunting of wild animals provides an important source of food and income for many rural peoples (Milner-Gulland and Bennett, 2003; Abernethy et al., 2013). In West and Central Africa in particular, present hunting levels are considered unsustainable for many large-bodied fauna, driven largely by the demands of the burgeoning human population (Abernethy et al., 2013). The loss of wildlife in these forests will not only be detrimental to biological diversity and ecosystem integrity, but will also affect people's livelihoods (Nasi et al., 2011), their ability to eat recommended levels of dietary protein, and their health and well-being (Arnold et al., 2011; Golden et al., 2011).

Despite a wealth of studies documenting offtake, consumption and trade of wild meat in tropical forests across Africa since the 1960s (e.g. Asibey, 1966), most studies have targeted small harvest areas, often around single sites, over short time periods (but see Fa et al., 2002). While such studies provide valuable site-level data, information on bushmeat use on larger scales and over longer time periods is currently lacking.

Comparing and combining results at national or regional scales can aid identification of spatial and temporal patterns and outliers in bushmeat use, and where time-series data are available, can be used to track changes in bushmeat use, and to calculate proxy indicators of faunal depletion or ecological change such as mean body mass of prey (Jerozolinski and Peres, 2003). Such information could assist decision-makers to develop evidence-based conservation strategies (van Vliet et al., 2012). To date, studies employing systematic literature reviews have determined regional bushmeat offtake trends within the Congo Basin (Wilkie and Carpenter, 1999) or compared offtake between continental forest regions (Fa et al., 2002, 2005). While these studies demonstrate the potential for meta-analyses to illustrate regional trends in bushmeat use, they have been limited by the availability of raw data from published studies (<40 sites).

Nations that are Parties to the Convention on International Trade in Endangered Species of Wild Fauna and Flora (CITES) and the Convention on Biological Diversity (CBD) are required to comply with recommendations, resolutions and decisions related to

'bushmeat' issues, such as building databases and providing knowledge about bushmeat harvest, trade and use. In particular, the CBD 11th Conference of Parties explicitly called for the development of '...appropriate monitoring systems of bushmeat harvest and trade [that] should be based on an integration of traditional, indigenous and scientific knowledge' (Decision XI/25, CBD, 2012). To begin to address these calls, we have developed a database to collate published, quantitative datasets on bushmeat use.

We decided to focus on West and Central African bushmeat because initial literature searches yielded substantially more information from West and Central Africa than from other regions, and the authors have built professional networks in the region. We present initial results on quantitative research effort into offtake, consumption and market sales of bushmeat over 30 years, and the spatial and temporal extent of these data. We ask the following questions of the database: (1) How many quantitative studies of bushmeat use exist in West and Central African, and how has research effort varied through time? (2) Where geographically have the majority of studies occurred? (3) What types of data have been collected? (4) What levels of sampling effort have been employed at each site? (5) Which species are represented within the current studies?

We discuss research gaps, and potential applications of the database, and propose plans to make the database an open-access resource for the conservation community.

2. Methods

2.1. Definition and geographic scope

We used the term "bushmeat hunting" as defined by the CBD's Liaison Group on Bushmeat as 'the harvesting of wild animals in tropical and sub-tropical countries for food and for non-food purposes, including for medicinal use' (CBD, 2012). However, following Nasi et al. (2008) we also excluded insects, crustaceans, molluscs and fish from our definition.

Our study region included all 10 Central African countries in the Central African Forests Commission (COMIFAC www.comifac.org)

and all countries within the Economic Community of West African States (ECOWAS www.ecowas.int).

2.2. Literature search and e-mail campaign

A search for data sources was conducted between June 2012 and June 2013. We searched scientific bibliographic databases, thesis archives, specialist, academic search engines and conservation NGO websites (Supplementary Table A.1) using relevant keywords and secondary terms in English, French and Spanish (Supplementary Table A.2). In addition, we contacted a number of conservation and development organisations, and posted on appropriate email lists, stating our project goals and asking for further contacts and/or any quantitative raw data (Supplementary Table A.3); many organisations then sent our request to their contact lists. This 'snowball' sampling technique (Noy, 2008) identified additional unpublished data sources.

2.3. Data inclusion criteria

Datasets were included if they: (1) provided a quantitative measure of bushmeat offtake, consumption and/or market availability/sales; (2) used non-biased data collection methods (e.g. recorded all species and hunting returns, not just mammals, or more specifically primates) and systematically sampled settlements/hunters to prevent selection bias; (3) identified carcasses to the species level (for exceptions see Supplementary Table A.4) and (4) recorded either the number of carcasses or the total biomass (kg). In cases where data were only partially provided, we requested additional information from the authors.

2.4. Data extraction and database terminology

We extracted the required data from all sources that matched the above inclusion criteria and stored the data in a purpose-built

Microsoft Access database (2010). The structure of the database with the main data tables is summarised below (Fig. 1).

- **Source** refers to the source of the data, either a scientific publication, NGO report or raw data.
- **Site** captures information about the location where data were collected. The 'Site' table holds the geographic coordinates of the site as well as information on site characteristics (e.g. country, settlement type, population size).
- **Sample** refers to the data of a specific type (market, consumption or offtake, see below) collected over a specific delimited time period at a specific site. The 'Sample' table holds data on the dates of the sample, the data type and the sampling methods and effort. To avoid pseudo-replication of samples that were published in multiple sources (e.g. in a PhD thesis and a published paper), we only included the sample once, from the earliest published source.
- **Harvest data** refers to the meat hunted, offered/sold or consumed. The 'Harvest Data' table holds data on the number of whole carcasses or biomass of each species recorded for each sample. Using data on adult body mass from the PanTHERIA database (Jones et al., 2009) and published data on carcass biomass (Fa and Purvis, 1997) we converted between the number of carcasses and biomass.
- **Data type** refers to one of three different data types: 'Market' data collected on the number/biomass of each taxon offered or sold at a market (not including individual shops, restaurants or chop bars). 'Consumption' data collected on the number/biomass of each taxon consumed by a household for set recall periods (i.e. 24 h, 3 days), either from data-sheets, diaries or memory. 'Offtake' refers to the number/biomass of each taxon caught by a hunter or household.

A full list of references, sites and samples stored in the database on March 2014 is provided in Supplementary Table A.5.

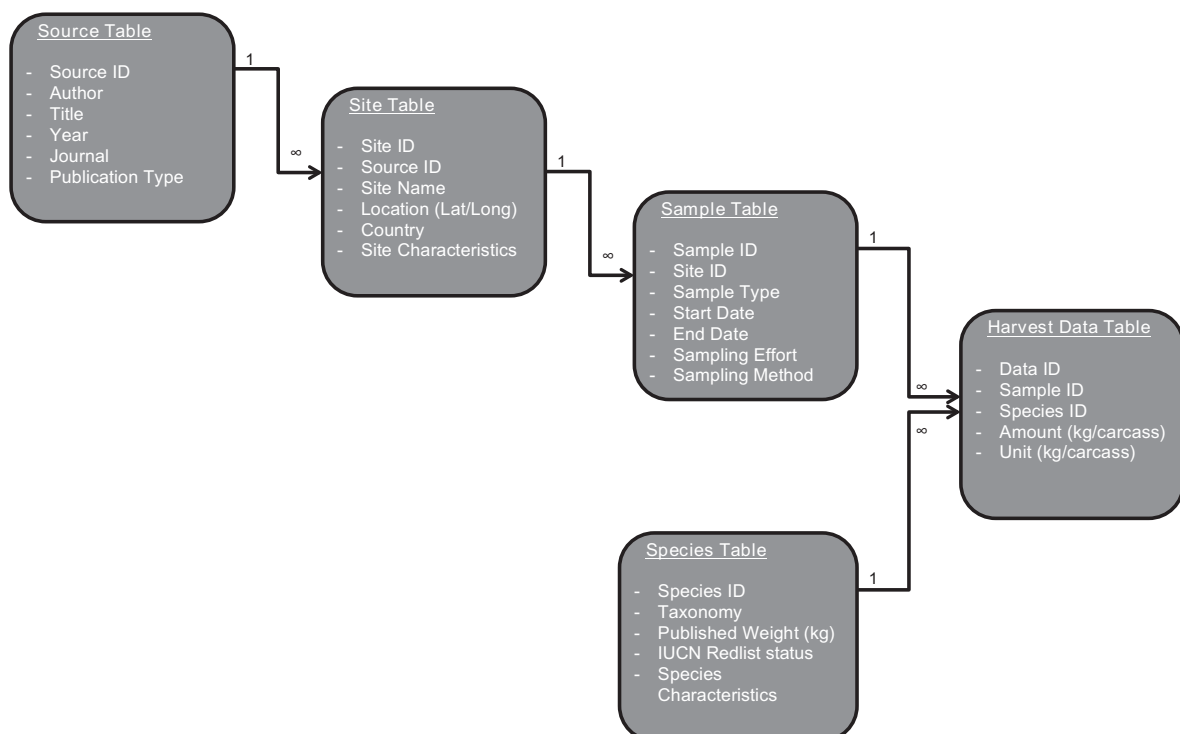


Fig. 1. Schematic diagram of the West and Central African bushmeat database. Arrows indicate the connections by which information from different tables can be linked. Asterisks highlight multiple data columns.

3. Results

3.1. Data types, sites and samples

The March 2014 version of the database holds data from 67 sources, which have collected 311 samples at 275 sites. The majority of sources (36 or 54%) were published scientific papers, 15 (22%) academic theses, 8 (12%) NGO reports, 7 (10%) raw data sets, from which data have been published, and one unpublished raw dataset. Although the earliest samples were collected in 1981, the majority (81%) of samples, for which exact dates are known, were collected between 2001 and 2011 (Fig. 2).

3.2. Geographical distribution of research effort

Research effort has focussed on Central Africa, with data available in six of 10 countries (248 samples), compared to West Africa, with data in five of 15 countries (63 samples; Fig. 3, data in Supplementary Table A.5). Surveyed sites were concentrated in the Cross-Sanaga region of Nigeria and Cameroon, where Fa et al. (2006) collected market data at 86 sites.

3.3. Type of data collected

The proportion of data types (market, consumption and offtake) sampled was similar across regions (Supplementary Fig. A.1 and Table A.6) with market samples being the most common (79.3% and 53.6%, in West and Central Africa, respectively), followed by offtake (17.5%, 23.0%) and consumption (3.2%, 23.4%). Only two consumption samples were collected in West Africa at two sites in Liberia (Fig. 3d). Carcasses were either reported as biomass (in kg) (17% of samples) or as number of individual carcasses (83%).

3.4. Time series

For samples for which the exact dates of collection were known ($n = 272$ samples) the mean sampling effort in days was 161 ± 10 days. Market and offtake data tended to be collected over longer periods of time (173 ± 14 days and 152 ± 22 days, respectively) compared to samples of consumption (98 ± 11 days).

Forty-eight sites (4 West, 44 Central Africa) have been surveyed more than once. For half of these (2 West, 22 Central), two different data types were collected (e.g. the site had a market survey and a

consumption survey). Repeat samples of the same data type at the same site in different years, which would permit time-series analyses, have been collected at 24 sites (Fig. 3a). Two of these sites were located in West Africa (Ghana and Cote d'Ivoire) and 22 in Central Africa (Cameroon, Equatorial Guinea, Gabon, Democratic Republic of Congo and Republic of Congo). These repeat samples were of all three study types (offtake, market or consumption) with a mean of 3.8 repeat samples per site (range: 2–15 repeat samples).

Samples were collected during all months of the year, however sampling intensity was 6.0 to 1.7 times higher between August and January compared to February and July for West and Central Africa, respectively (Supplementary Fig. A.2).

3.5. Species represented in the database

A total of 177 species from 25 orders have been recorded in the database, 134 (76%) of these were mammals (Table 1; species list in Supplementary Table A.7). Although the majority of species in the database are classified by the IUCN Red List (IUCN 2014) as Least Concern (62%), 17.3% (31 species including reptiles) are classified as threatened (i.e. either Critically Endangered, Endangered or Vulnerable). The database contains a statistically significantly greater proportion of threatened species than are occurring in the 5 West and 6 Central African countries (26 threatened of 159 species in the database vs. 256 of 2392 species of mammal, bird and amphibian recorded in the IUCN Red List; χ^2 goodness of fit test, $\chi^2 = 9.83$, $df = 1$, p -value = 0.002. Reptiles were not included in the χ^2 goodness of fit test, as they are not yet fully assessed in the IUCN Red List).

4. Discussion

Conservation practise and policy have often been criticised for not being based on empirical evidence (Sutherland et al., 2004). The West and Central African Bushmeat database has been created with the aim of synthesising all quantitative bushmeat studies in the region, and providing a resource for analysing trends in bushmeat harvest, consumption and trade at the national and regional level.

Despite the large number of sources identified, we suspect that further datasets exist, but are not currently publicly available. The majority of identified datasets were published in peer-reviewed journals or as academic theses online. However, many NGO and

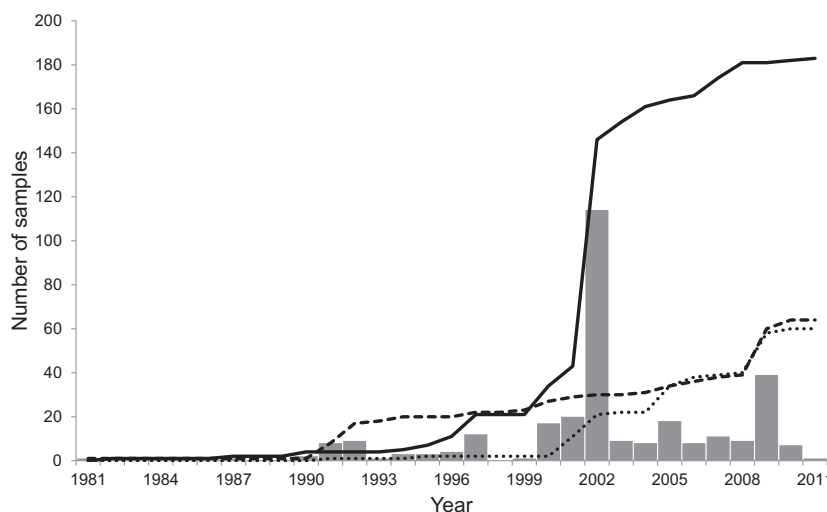


Fig. 2. Cumulative number of samples of bushmeat consumption (dotted), market trade (solid) and hunter offtake (dashed) over the last three decades, as currently recorded in the database. Bars show the start year for each sample. The large increase in market studies in 2002 reflects the survey of 86 markets in the Cross-Sanga region of Cameroon and Nigeria by Fa et al. (2006).

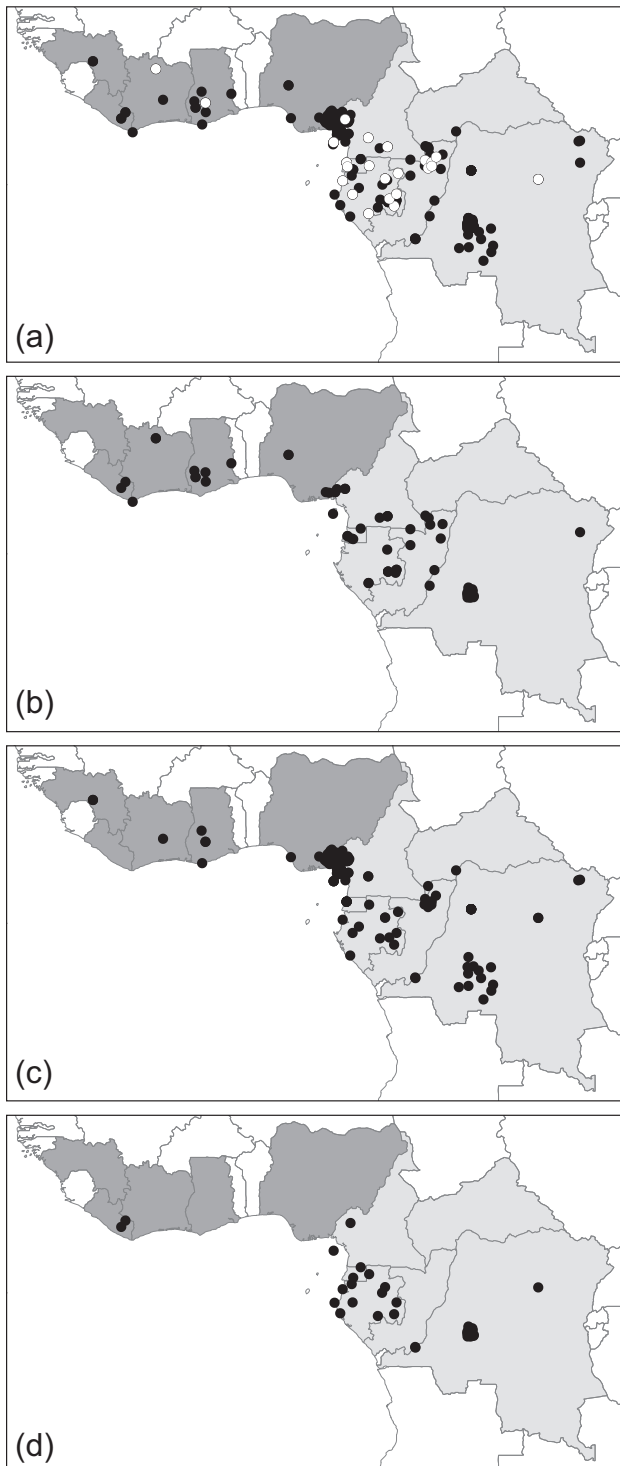


Fig. 3. Distribution of samples across West and Central Africa by data type. (a) Total with time series sites highlighted (white circle) (b) Offtake data (c) Market data (d) Consumption data. West African countries shown in dark grey ($n = 6$) and Central African countries in light grey ($n = 5$).

government technical reports with valuable site-specific information are published internally or on NGO websites, and often remain undetected. Studies included in this database were also most likely to have been published in the last decade. Although this probably reflects a genuine increase in research effort, it may also partly reflect an increase in online publication of student theses and technical reports, which would previously have been published only as hardcopies and therefore may not have been found by this study.

Further, our search method, asking contacts, might have affected the bias towards more recent publications. Many older reports are only available in-country or directly from the authors, and we would ask that anyone who knows of any datasets that may have been overlooked by this study contact the corresponding authors. In the medium to long term we envisage that the database will be developed to function as a live, public repository for both published and unpublished datasets of bushmeat offtake, trade and consumption to allow near real-time, comprehensive information on bushmeat to be made available to decision makers.

Market data were the most commonly collected data type, possibly reflecting the relative ease with which information can be collected at bushmeat markets. Although market data offer a pragmatic way of assessing minimal extraction levels at large scales, studies of urban markets fail to provide an accurate picture of off-take levels and sustainability (Ling and Milner-Gulland, 2006). Trends in species composition of bushmeat in markets may not reflect the wildlife community in the surrounding area as offtake will vary with changes in hunting effort, technologies, and size of hunting catchments. In comparison, few data are currently available on bushmeat consumption and consumer choices, especially in West Africa where data on bushmeat consumption were only available for Liberia. Consumer demand, as indicated by consumption, is potentially a critical aspect to monitor, since we expect changes in demand to be a key determinant of future hunting and trade efforts and ultimately sustainable resource use (van Vliet et al., 2010). This highlights a need for increasing research efforts on consumption studies and the need to better understand consumers' preferences.

Birds and reptiles are likely underrepresented in bushmeat studies and therefore in our database. Although we only included studies which stated that they reported all species hunted, sold or consumed, often overall household offtake of birds and reptiles is likely underestimated by studies of hunter bag counts as these taxa are also harvested by small children or by women during other livelihoods activities, such as agriculture. Further, invertebrate harvest is often not recorded by "wild meat" researchers. Nevertheless, these taxa are an important source of protein and are likely impacted by hunting, and future research needs to acknowledge the importance of these taxa and the limitations of current sampling methods.

A geographical bias also exists, with more sites surveyed in Central Africa than in West Africa, and disproportionate focus on certain countries within Central Africa (Gabon, Equatorial Guinea, Cameroon and Nigeria). This may partly reflect the accessibility of the research sites, as well as the interests of research institutions and donor organisations, and that of the lead authors. It may also reflect a focus on areas perceived to be experiencing higher bushmeat hunting and trade intensities, and hence higher levels of threat. West Africa has already lost much of its original tropical forest and has suffered much higher hunting intensities than the less fragmented Central African forests (Schulte-Herbrüggen et al., 2013). The general perception is that West Africa is now in a 'post-depletion' phase, having already lost larger wildlife species

Table 1

The number of orders and species in the database for the four most common taxa: mammals, birds amphibians and reptiles. Also shown are the number of threatened species classified as Critically Endangered (CR), Endangered (EN) and Vulnerable (VU) in the IUCN Red List (IUCN, 2014).

	Number of orders	Number of species	Number of threatened species (CR/EN/VU)
Mammalia	12	134	4/5/14
Aves	9	24	0/0/2
Amphibia	1	1	0/0/1
Reptilia	3	18	2/1/2

from most of the region (Cowlshaw et al., 2005). However, this perception is a generalisation that probably masks considerable variation in patterns of depletion, trade and consumption within this region. Data from a wider geographical range of sites would be desirable, including more and less depleted areas in both West and Central Africa.

Hunting sustainability cannot be inferred from static data (Coad et al., 2013), but of the sites identified in this study, only 9% had repeat samples of the same data type. Few studies have therefore been able to track changes in hunting consumption or off-takes over time (but see Poulsen et al., 2009; Coad et al., 2013; Gill et al., 2012). To address this problem, a more systematically selected and regularly monitored set of sites would be desirable, spanning a range of current depletion levels and contextual socio-economic circumstances in both regions. Researchers should capitalise on the wealth of baseline data presented in this database and resample sites to increase our knowledge of how and why bushmeat use changes over time. Regional monitoring systems are being developed; an example is the *Système de suivi de la filière viande de brousse en Afrique Centrale (SYVBAC)*, a monitoring framework being developed to operate under the Central African Forests Observatory (van Vliet et al., 2010). SYVBAC aims to collect data at systematically selected sites across Central Africa and develop key indicators to track bushmeat off-take, trade and consumption; impacts of bushmeat hunting on wildlife populations, and ultimately the sustainability of current hunting levels. The database presented here could be a valuable tool to inform the development, implementation and review stages of such monitoring projects.

The West and Central African bushmeat database is the first attempt at collating published quantitative data on bushmeat off-take, trade and consumption. The database continues to evolve and we welcome further contributions. Based on our collation as of March 2014 and preliminary analyses of bushmeat data for West and Central Africa, we suggest the following priorities for bushmeat research and policy that would be facilitated by this database:

- Investigate the drivers of bushmeat use, consumption and sales at national and regional levels by undertaking a meta-analysis of existing studies.
- Develop indicators for measuring bushmeat use and sustainability, designed to inform national and regional policy on bushmeat hunting. Indicators should be scientifically robust, and the data required for the indicators should be practically feasible to collect.
- Use these indicators to map regional hotspots of unsustainability.
- Identify knowledge gaps and future research priorities for bushmeat. The studies collated in this database provide an overview of past research effort in West and Central Africa. However, they were originally collected as individual studies, rather than undertaken with one overriding research goal in mind. This database can now function as an evolving baseline for bushmeat research, enabling researchers, in collaboration with conservation practitioners, to take stock and identify the key questions for future bushmeat research.

Acknowledgements

GT, LC and SB acknowledge funding and technical support from the Oxford Martin School, the John Fell Fund, University of Oxford and the Zoological Society of London. We would like to acknowledge the use of published datasets from P.A. Anadu, T.J. Basset, G.M. Carpaneto, M. Dethier, E.E. Fossung, K. Hayashi, M. Hoffman,

M. Thibault, P.K. Muchaal, P. Mbete, M. Puit, J. Rist and L. Hickey, and thank all people involved in the collection of these data for their contribution. We thank Daniel Ingram and two anonymous reviewers for helpful comments on the manuscript. Further acknowledgements and funders of individual studies are listed in [Supplementary Material](#).

Appendix A. Supplementary data

Supplementary data associated with this article can be found, in the online version, at <http://dx.doi.org/10.1016/j.biocon.2014.11.001>.

References

- Abernethy, K., Coad, L., Taylor, G., Lee, M., Maisels, F., 2013. Extent and ecological consequences of hunting in Central African rainforests in the 21st century. *Philos. Trans. Roy. Soc. B* 368, 20130494.
- Arnold, M., Powell, B., Shanley, P., Sunderland, T.C.H., 2011. Editorial: forests, biodiversity and food security. *Int. Forestry Rev.* 13, 259–264.
- Asibey, E.O.A., 1966. Why not bushmeat too? *The Ghana Farmer* 10, 165–170.
- Convention on Biological Diversity [CBD], 2012. In: Decisions adopted by the Conference of the Parties to the Convention on Biological Diversity at its Eleventh Meeting, Hyderabad, India, 8–19 October 2012 (Document UNEP/CBD/COP/11/35).
- Coad, L., Schleicher, J., Starkey, M., Milner-Gulland, E.J., Marthews, T.R., Manica, A., Balmford, A., Mbombe, W., Ndop, T., Abernethy, K.A., 2013. Social, economic and ecological change over a decade in a village hunting system. *Central Gabon. Conserv. Biol.* 27, 270–280.
- Cowlshaw, G., Mendelson, S., Rowcliffe, M.J., 2005. Evidence for post depletion sustainability in a mature bushmeat market. *J. Appl. Ecol.* 42, 460–468.
- Fa, J.E., Purvis, A., 1997. Body size, diet and population density in afro-tropical forest mammals: a comparison with neotropical species. *J. Anim. Ecol.* 66, 98–112.
- Fa, J.E., Peres, C.A., Meeuwig, J., 2002. Bushmeat exploitation in tropical forests: an intercontinental comparison. *Cons. Biol.* 16, 232–237.
- Fa, J.E., Ryan, S.F., Bell, D.J., 2005. Hunting vulnerability, ecological characteristics and harvest rates of bushmeat species in afro-tropical forests. *Biol. Conserv.* 121, 167–176.
- Fa, J.E., Seymour, S., Dupain, J., Amin, R., Albrechtsen, L., Macdonald, D.W., 2006. Getting to grips with the magnitude of exploitation: bushmeat in the Cross-Sanaga rivers region, Nigeria and Cameroon. *Biol. Conserv.* 129, 497–510.
- Gill, J.C., Fa, J.E., Rowcliffe, M.J., Kumpel, N.F., 2012. Drivers of change in hunter off-take and hunting strategies in Sende, Equatorial Guinea. *Conserv. Biol.* 26, 1052–1060.
- Golden, C.D., Fernald, L.C., Brashares, J.S., Rasolofoniaina, B.R., Kremen, C., 2011. Benefits of wildlife consumption to child nutrition in a biodiversity hotspot. *Proc. Nat. Acad. Sci.* 108, 19653–19656.
- IUCN, 2014. The IUCN Red List of Threatened Species. Version 2014.1. <<http://www.iucnredlist.org>> (accessed 25.6.2014).
- Jerozolinski, A., Peres, C.A., 2003. Bringing home the biggest bacon: a cross-site analysis of the structure of hunter-kill profiles in Neotropical forests. *Biol. Conserv.* 111, 415–425.
- Jones, K.E., Bielby, J., Cardillo, M., Fritz, S.A., O'Dell, J., David, L.C., Kamran Safi, O., Sechrest, W., Boakes, E.H., Carbone, C., Connolly, C., Cutts, M.J., Foster, J.K., Grenyer, R., Habib, M., Plaster, C.A., Price, S.A., Rigby, E.A., Rist, J., Teacher, A., Bininda-Emonds, O.R.P., Gittleman, J.L., Mace, G.M., Purvis, A., 2009. PanTHERIA: a species-level database of life history, ecology, and geography of extant and recently extinct mammals. *Ecology* 90, 2648.
- Ling, S., Milner-Gulland, E.J., 2006. Assessment of the sustainability of bushmeat hunting based on dynamic bioeconomic models. *Conserv. Biol.* 20, 1294–1299.
- Milner-Gulland, E.J., Bennett, E.L., 2003. Wild meat: the bigger picture. *Trends Ecol. Evol.* 18, 351–357.
- Nasi, R., Brown, D., Wilkie, D., Bennett, E., Tutin, C., van Tol, G., Christophersen, T., 2008. Conservation and Use of Wildlife-Based Resources: The Bushmeat Crisis. CBD Technical Series No. 33. Secretariat of the Convention on Biological Diversity, Montreal, and Center for International Forestry Research (CIFOR), Bogor, 50pp.
- Nasi, R., Taber, A., van Vliet, N., 2011. Empty forests, empty stomachs? Bushmeat and Livelihoods in The Congo and Amazon Basins. *Int. Forestry Rev.* 13, 355–368.
- Noy, C., 2008. Sampling knowledge: the hermeneutics of snowball sampling in qualitative research. *Int. J. Social Res. Method* 11, 327–344.
- Poulsen, J.R., Clark, C.J., Mavah, G., Elkan, P.W., 2009. Bushmeat supply and consumption in a tropical logging concession in northern Congo. *Conserv. Biol.* 23, 1597–1608.
- Schulte-Herbrüggen, B.J., Rowcliffe, M., Homewood, K., Kurpiers, L., Whitham, C., Cowlshaw, G., 2013. Human ecology wildlife depletion in a West African farm-forest mosaic and the implications for hunting across the landscape. *Human Ecol.* 41, 795–806.
- Sutherland, W.J., Pullin, A.S., Dolman, P.M., Knight, T.M., 2004. The need for evidence-based conservation. *Trends Ecol. Evol.* 19, 305–308.

- van Vliet, N., Ringuet, S., Ngandjui, G., Mouzong, E., 2010. Prise en compte de la faune sauvage dans les concessions forestières d'Afrique Centrale – Rapport de l'atelier de Libreville – 8–10 June 2010, TRAFFIC Afrique Centrale, Yaoundé, 42pp.
- van Vliet, N., Nasi, R., Abernethy, K., Fargeot, C., Kümpel, N.F., Ndong Obiang, A.M., Ringuet, S., 2012. The role of wildlife for food security in Africa: a threat to biodiversity? In: de Wasseige C., de Marcken P., Bayol N., Hiol Hiol F., Mayaux Ph., Desclée B., Nasi R., Billand A., Defourny P., Eba'a Atyi R. (Eds.), *The Forests of the Congo Basin – State of the Forest 2010*, Publications Office of the European Union, Luxembourg, pp. 123–135.
- Wilkie, D.S., Carpenter, J.F., 1999. Bushmeat hunting in the Congo Basin: an assessment of impacts and options for mitigation. *Biodiv. Conserv.* 8, 927–929.

Supplementary Material

Synthesising bushmeat research effort in West and Central Africa: a new regional database

G. Taylor, J. P. W. Scharlemann*, M. Rowcliffe, N. Kümpel, M. B. J. Harfoot, J. E. Fa, R. Melisch, E.J Milner-Gulland, S. Bhagwat, K.A. Abernethy, A. S. Ajonina, L. Albrechtsen, S. Allebone-Webb, E. Brown, D. Brugiére, C. Clark, M. Colell, G. Cowlshaw, D. Crookes, E. De Merode, J. Dupain, T. East, D. Edderai, P. Elkan, D. Gill, E. Greengrass, C. Hodgkinson, O. Ilambu, P. Jeanmart, J. Juste, J.M. Linder, D. W. Macdonald, A. J. Noss, P. U. Okorie, V. J. J. Okouyi, S. Pailler, J. R. Poulsen, M. Riddell, J. Schleicher, B. J. Schulte-Herbrüggen, M. Starkey, N. van Vliet, C. Whitham, A. S. Willcox, D. S. Wilkie, J. H. Wright, L. M. Coad*

*E-mail address: lauren.coad@ouce.ox.ac.uk (L. Coad); j.scharlemann@sussex.ac.uk (J.P.W. Scharlemann).

Supplementary Tables

Table A.1

Websites and libraries searched

Library or website name	URL
ISI Web of Knowledge	www.wok.mimas.ac.uk
Proquest Dissertations and Theses	www.il.proquest.com
University of Oxford Libraries	www.bodleian.ox.ac.uk
Google Scholar	www.scholar.google.co.uk
Google	www.google.co.uk
BCTF bushmeat Library	www.bushmeat.org

Table A.2

Key words used in systematic literature search

Key terms	Secondary terms	Example Search combinations
Africa	Commercial	Bushmeat* Trade AND Africa
Bushmeat	Crisis	Bushmeat* Crisis AND Congo Basin
Central Africa	Depletion	Bushmeat* Consumption AND Livelihoods
Congo Basin	Effort	Hunting* Effort AND Practices
Consumption	Harvest	
Defaunation	Practices	
Hunting	Pressure	
Offtake	Subsistence	
West Africa	Sustainability	
Wildmeat	Trade	

French: Afrique; la viande de brousse; Consommation; défaunation; Chasse; prélèvement de chasse, la viande sauvage; afrique de l'ouest; afrique centrale

Spanish : Consumo; Caza; fauna; cuenca del Congo; defaunación; carne de animales silvestres; sostenibilidad

Table A.3

Academic institutions and NGOs contacted

Institution/NGO
Biodiversity-L Listserve
Wildlife Conservation Society (WCS)
World Wide Fund for Nature (WWF)
Flora and Fauna International (FFI)
TRAFFIC
Great Apes Survival Partnership (GRASP)
Zoological Society of London (ZSL)
Imperial College London ICCS
University of Oxford (Geography and Zoology Departments)
The Durrell Institute

Table A.4

List of taxa that are commonly grouped at the genus level in data sources. For example species that are difficult to identify when looking at butchered carcasses (for instance, many publications group red duikers, *Cephalophus* spp.) or where species may not be differentiated locally, identification requires a high level of ornithological skills, and the identification to species level may not be required for the study aims (e.g. francolins, *Francolinus* spp.). The exclusion of datasets for non-identification to species level for these Genera would have resulted in the exclusion of a high number of datasets.

Class	Order	Family	Genus
Aves	Coraciiformes	Bucerotidae	Tockus
Aves	Galliformes	Phasianidae	Francolinus
Mammalia	Artiodactyla	Bovidae	Cephalophus
Mammalia	Artiodactyla	Bovidae	Tragelaphus
Mammalia	Carnivora	Viverridae	Genetta
Mammalia	Lagomorpha	Leporidae	Lepus
Mammalia	Primata	Cercopithecidae	Cercocebus
Mammalia	Primata	Cercopithecidae	Cercopithecus
Mammalia	Primata	Cercopithecidae	Colobus
Mammalia	Primata	Cercopithecidae	Papio
Mammalia	Primata	Cercopithecidae	Piliocolobus
Mammalia	Primata	Galagidae	Galago
Mammalia	Rodentia	Anomaluridae	Anomalurus
Mammalia	Rodentia	Muridae	Rattus
Mammalia	Rodentia	Sciuridae	Funisciurus
Mammalia	Rodentia	Sciuridae	Xerus
Reptilia	Squamata	Elapidae	Naja
Reptilia	Squamata	Pythonidae	Python
Reptilia	Squamata	Varanidae	Varanus
Reptilia	Squamata	Viperidae	Bitis
Reptilia	Testudines	Testudinidae	Kinixys

Table A.5

Complete list of sites included in the database, providing country, type of data, first author of publication, site name, start year of study and year of publication.

Country	Site Name	Data type	First Author	Year published	Start of study
CAF	Bangui	Market	Fargeot, C.	2008	2005
CAF	Banyanga	Market	Hodgkinson, C.	2009	2006
CAF	Bayanga	Offtake	Noss, A.J.	1998	1992
CAF	Mossapoula	Offtake	Noss, A.J.	1999	1993
CIV	Kakoli	Offtake	Basset, T.J.	2005	1981
CIV	Kakoli	Offtake	Basset, T.J.	2005	1997
CIV	Toumodi	Market	Hoffman, T.	2000	1995
CMR	Ajayukndip; Akak; Ashum; Axe braconniere; Bafia; Bakingili; Bangem; Batoke; Bayenti; Big Nyang; Boa; Bova; Dallas Camp; Douala (March Central); Douala (Ndokotti market); Ekonjo; Elumba; Etome; Eyang Atem Ako; Fabe; Illoani; Inokum; Kembong; Likoko; Likombe; Lipenja; Mamfe; Manyemen; Mapanja; Massaka; Mbenyan/Ndebaya; Mbokambo; Mbongo; Mbouassoum; Menji; Mokange; Mokango village; Mopako; Mundemba; Munyenge; Nfagwa; Ngatame; Ngwatta; Njonje; Ossing; Santchou; Yabassi	Market	Fa, J.E.	2006	2002
CMR	Banyang-Mbo Wildlife Sanctuary	Offtake	Wilcox, A.S.	2007	1999
CMR	Banyang-Mbo Wildlife Sanctuary_2	Offtake	Abugiche, A.S.	2008	2006

Country	Site Name	Data type	First Author	Year published	Start of study
CMR	Bareka-Batanga; Bera; Ekom; Ekundu-Kundu; Erat; Esukuton; Ikenge	Offtake	Infield, M.	2005	1991
CMR	Northern Provinces (Cameroon)	Consumption	Nijiforti, H.	1996	1991
CMR	Cross Sanaga Region (Cameroon)	Market	Macdonald, D.W.	2011	2002
CMR	Dja Reserve	Offtake	Dethier, M.	1995	1994
CMR	Douala	Market	Macdonald, D.W.	2011	2002
CMR	Ekom	Offtake	Jeanmart, P.	1998	1997
CMR	Ikenge village	Offtake	Linder, J.M	2008	2002
CMR	Lebialem	Consumption	Wright, J.	2010	2007
CMR	Manja	Market	Linder, J.M	2008	2002
CMR	Mekas	Offtake	Muchaal, P.K.	1999	1994
CMR	Mundemba	Market	Linder, J.M	2008	2002
CMR	N Village	Offtake	Hayashi, K.	2008	2001
CMR	Tombe/Banyu	Market	Linder, J.M	2008	2002
CMR	Yaounde	Market	Edderai, D.	2006	2003
CMR	Yaounde	Market	Fossung, E.	2011	2011
COD	Bisenge; Bolinda; Bombole; Bongimba; Bonkwankoso; Bosenge; Gilkson Mange; Ibaya; Ilongo; Isoko; Itumba; Lokolama; Looma; MangeNord; Nongeturi; NongNord; NongSud; Watu	Offtake	Abernethy, K.	2010	2009
COD	Dungu	Market	De Merode, E.	2006	1996

Country	Site Name	Data type	First Author	Year published	Start of study
COD	Isoko; Itumba; Lokolama; Looma; MangeNord; Nongeturi; NongNord; NongSud; Watu; Bongimba; Bonkwankoso; Bosenge; Gilkson Mange; Ibaya; Ilongo; Bisenge; Bolinda; Bombole	Consumption	Abernethy, K.	2010	2009
COD	Kiliwa	Consumption	De Merode, E.	2004	1995
COD	Kiliwa	Market	De Merode, E.	2006	1996
COD	Kinshasa	Consumption	Hickey, L.	2008	2008
COD	Kisangani	Market	van Vliet, N.	2012	2002
COD	Kisangani	Market	van Vliet, N.	2012	2008
COD	Maringa; Lopor; Lulonga; Lomako; Yokokala; Ikelemba; Bosomba; Intandando; Matoku	Market	Dupain, J.	2012	1997
COD	Ndoki; Nganzicolo; Ngatongo; Toukoulaka	Offtake	Wilkie, D.	2000	2000
COD	Okapi Faunal Reserve	Offtake	Brown, E.	2007	2007
COD	Oshwe; Yuki; Bongimba; Nongepulu; Dekese; Kananga; Tshikapa; Kikwit; Mweka; Luebo; Lokolama; Ilebo; Piopio	Market	Steel, L.	2008	2007
COG	Brazaville	Consumption	Mbete,P.	2011	2006
COG	Brazaville	Market	Mbete,P.	2011	2008
COG	Kabo, Pokola,Ndoki1, Ndoki2, Loundoungou	Market	Poulsen, J.R.	2009	2000
COG	Makao-Linganga	Offtake	Riddell, M.	2011	2007
COG	Odzala-kokoua NP	Offtake	Mbete,P.	2010	2009
COG	Ouessou	Market	Bennet Hennessy, A.	2008	1994

Country	Site Name	Data type	First Author	Year published	Start of study
GAB	Alele II; Assiami; Obia; Obouo; Okangoville; Omoy; Oyou	Offtake	Carpaneto, G.M.	2007	1992
GAB	Baniati-Moutouyeni; Kondadembe; Kouanya; Dibouka; Litsebe; Mandzi-Massengalani; Mandzi; Moukouanyo; Ndanda	Consumption	Starkey, M.	2004	2001
GAB	Birougou; Ivindo; Monts de Cristal	Consumption	Parks and people	2006	2003
GAB	Dibouka	Offtake	Coad, L.M.	2010	2004
GAB	Dibouka	Offtake	Coad, L.M.	2010	2007
GAB	Franceville; Koulamoutou; Lambaréné; Libreville; Makokou; Mekambo; Moanda; Ndjolé; Okondja; Oyem; Obiri	Market	Abernethy, K.	2006	2000
GAB	Gamba Complex	Market	Thibault, M.	2003	1997
GAB	Makokou	Market	Okouyi, V.J.J.	2006	2002
GAB	Makokou; Franceville; Lambaréné; Libreville; Okondja; Ombooué; Ombooué villages; Oyem; Port Gentil; Villages	Consumption	Wilkie, D.	2005	2002
GAB	Ntsiete	Offtake	Van Vliet, N.	2008	2006
GHA	Assin Fosu	Offtake	Ntiamoa-Baidu, Y	2005	
GHA	Goasso	Offtake	Ntiamoa-Baidu, Y	2005	
GHA	Jasikan	Offtake	Ntiamoa-Baidu, Y	2005	
GHA	Kumasi	Market	Crookes, D.J.	2005	1987
GHA	Kumasi	Offtake	Ntiamoa-Baidu, Y	2005	
GHA	Kumasi	Market	Hoffman, T.	2000	1995
GHA	Sekondi-Takoradi	Market	Cowlishaw, G.	2005	2000

Country	Site Name	Data type	First Author	Year published	Start of study
GHA	Techiman	Market	Swenson, J.	2005	2003
GHA	Wansampo	Offtake	Schulte-Herbruggen, B.J.	2011	2008
GHA	Wansampo	Offtake	Whitham, C.	2009	2009
GIN	Haut Niger National Park	Market	Brugiere, D.	2009	2001
GIN	Faranah	Market	Pailler, S.	2009	2006
GNQ	Beayop	Consumption	Allebone-Webb, S.	2009	2005
GNQ	Beayop	Offtake	Allebone-Webb, S.	2009	2005
GNQ	Kilometro Cinco/Bata	Market	Allebone-Webb, S.	2009	2005
GNQ	Kilometro Cinco/Bata	Market	East, T.	2005	2003
GNQ	Kilometro Cinco/Bata	Market	Gill, D.	2010	2010
GNQ	Malabo	Consumption	Albrechtsen, L.	2006	2003
GNQ	Malabo	Market	Albrechtsen, L.	2006	2003
GNQ	Malabo	Market	Albrechtsen, L.	2007	1996
GNQ	Malabo	Market	Fa, J.E.	2000	1991
GNQ	Malabo; Kilometro Cinco/Bata	Market	Juste, J.	1995	1990
GNQ	Midyobo Anvom	Offtake	Rist, J.	2008	2005
GNQ	Moka, Bioko	Offtake	Colell, M.	1994	1992
GNQ	Mundoasi	Market	Allebone-Webb, S.	2009	2005
GNQ	Mundoasi	Market	Puit, M.	2003	2003
GNQ	Sendje	Offtake	Gill, D.	2010	2010
GNQ	Sendje	Offtake	Kumpel, N.F.	2006	2001
GNQ	Teguete	Consumption	Allebone-Webb, S.	2009	2005
GNQ	Teguete	Offtake	Allebone-Webb, S.	2009	2005

Country	Site Name	Data type	First Author	Year published	Start of study
LBR	Cavally River	Offtake	Covey, R.	2009	2009
LBR	Putu	Consumption	Greengrass, E.	2011	2010
LBR	Putu	Offtake	Greengrass, E.	2011	2010
LBR	Sapo	Consumption	Greengrass, E.	2011	2010
LBR	Sapo	Offtake	Greengrass, E.	2011	2010
NGA	Abragba; Akor; Akpap; Aningaje; Attan Odot; Ayadehe head bridge; Calabar municipality; Creek Town; Effraya; Ekan; Ekimaya; Ekonganaku; Ekukunela; Etara; Etokomi; Eyeyen; Ifumkpa; Iko Esai; Ikom; Iku; Mfamosing; Mfum; Ndon Nwong; New Ekuri; Ngehe; Nkame; Nsan; Nyaje; Obung; Ochon; Ojor; Okokori; Okuni; Old Ekuri; Old Ndebiji; Old Netim; Orem; Ubambat; Uyanga	Market	Fa, J.E.	2006	2002
NGA	Amuro-Okigwe	Market	Okorie, P.U.	2004	2004
NGA	Bendel State	Market	Anadu, P.A.	1998	1982
NGA	Calabar	Market	Macdonald, D.W.	2011	2002
NGA	Cross Sanaga Region (Nigeria)	Market	Macdonald, D.W.	2011	2002

Where CMR – Cameroon, CAF – Central African Republic, CIV – Ivory Coast, COD – Democratic Republic of Congo, COG – Congo Republic, GAB – Gabon, GHA – Ghana, GIN – Guinea., GNQ – Equatorial Guinea, LBR – Liberia, NGA – Nigeria

References

Abugiche, S.A. 2008. Impact of hunting and bushmeat trade on biodiversity loss in Cameroon: A case study of the Banyang-Mbo Wildlife Country. MSc Thesis. Brandenburg University of Technology.

- Albrechtsen, L., Fa, J.E., Barry, B., Macdonald, D.W. 2006. Contrasts in availability and consumption of animal protein in Bioko Island, West Africa: the role of Bushmeat. *Environ. Conserv.* 32: 340-348.
- Albrechtsen, L., Macdonald, D.W., Johnson, P.J., Castelo, R., Fa, J.E. 2007. Faunal loss from bushmeat hunting: empirical evidence and policy implication in Bioko Island. *Environ. Sci. Policy* 10: 654-667.
- Anadu, P., Elamah, P., Oates, J. 1988. The bushmeat trade in Southwestern Nigeria - a case-study. *Human Ecol.* 16: 199-208.
- Bassett, T. J. 2005. Card-carrying hunters, rural poverty, and wildlife decline in northern Cote d'Ivoire. *Geogr. J.* 171: 24-35.
- Bennett Hennessey, A., Rogers, J. 2008. A study of the bushmeat trade in Ouessou, Republic of Congo. *Conserv. Soc.* 6: 179-184.
- Brown, E. 2007. Managing hunting and transportation of wildlife in and around the Okapi Faunal Reserve, Democratic Republic of Congo. WCS Okapi Faunal Reserve, DRC.
- Brugiere, D. and Magassouba, B. 2009. Pattern and sustainability of the bushmeat trade in the Haut Niger National Park, Republic of Guinea. *Afr. J. Ecol.* 44: 630-639.
- Carpento, G.M., Fusari, A., Okongo, H. 2007. Subsistence, hunting and exploitation of mammals in the Haut-Ogooue province, South eastern Gabon. *J. Anthro. Sci.* 85: 183-193.
- Coad, L. 2007. Bushmeat hunting in Gabon: Socio-economics and hunter behaviour. Ph.D. thesis, University of Cambridge, UK.
- Coad, L., Abernethy, K., Balmford, A., Manica, A., Airey, L., Milner-Gulland, E.J. 2010. Distribution and use of income from bushmeat in a rural village, central Gabon. *Conserv. Biol.* 24: 1510-1518.
- Coad, L., Schleicher, J., Milner-Gulland, E.J., Marthews, T.R., Starkey, M., Manica, A., Balmford, A., Mbombe, W., Ndop, T., Abernethy, K.A. 2013. Social and ecological change over a decade in a village hunting system, central Gabon. *Conserv. Bio* 27: 270-280.
- Cowlishaw, G., Mendelson, S., Rowcliffe, M.J. 2005. Evidence for post depletion sustainability in a mature bushmeat market. *J. App. Ecol.* 42: 460-468.
- Colell, M., Mate, C., Fa, J. 1994. Hunting among Moka Bubis in Bioko: dynamics of faunal exploitation at the village level. *Biodivers. Conserv.* 3: 939-950.
- Crookes, D.J., Ankudey, N., Milner-Gulland, E.J. 2005. The value of a long term bushmeat market dataset as an indicator of system dynamics. *Environ. Conserv.* 32: 333-339.
- De Merode, E., Homewood, K., Cowlishaw, G. 2004. The value of bushmeat and other wild foods to rural households living in extreme poverty in Democratic Republic of Congo. *Biol. Conserv.* 118: 573-581.
- De Merode, E., Cowlishaw, G. 2006. Species protection, the changing informal economy, and the politics of access to the bushmeat trade in the Democratic Republic of Congo. *Conserv. Bio* 20: 1262-1271.
- Dethier, M. 1995. Etude Chasse. Projet ECOFAC-Composante Cameroun
- Dupain, J., Nackoney, J., Vargas, M.J., Johnson, P.J., Farfan, M.A., Bofaso, M., Fa, J.E. 2012. Bushmeat characteristics vary with catchment conditions in a Congo Market. *Biol. Conserv.* 146: 32-40.
- East, T., Kumpel, N.F., Milner-Gulland, E.J., Rowcliffe, J.M. 2005. Determinants of urban bushmeat consumption in Rio Muni, Equatorial Guinea. *Biol. Conserv.* 126:206-215.

- Edderai, D., Dame, M. 2006. A census of the commercial bushmeat market in Yaounde, Cameroon. *Oryx* 40: 472-475
- Fa, J. E., Yuste, J.E.G. 2001. Commercial bushmeat hunting in the Monte Mitra forests, Equatorial Guinea: Extent and impact. *Anim. Bio Conserv.* 24: 31-52.
- Fa, J.E., Ryan, S.F., Bell, D.J. 2005. Hunting vulnerability, ecological characteristics and harvest rates of bushmeat species in afrotropical forests. *Biol. Conserv.* 121: 167-176.
- Fa, J.E., Seymour, S., Dupain, J., Amin, R., Albrechtsen, L., Macdonald, D.W. 2006. Getting to grips with the magnitude of exploitation: bushmeat in the Cross-Sanaga rivers region, Nigeria and Cameroon. *Biol. Conserv.* 129: 497- 510.
- Gill, D. 2010. Drivers of change in hunter offtake and hunting strategies in Sendje, Equatorial Guinea. MSc Thesis Imperial College London.
- Greengrass, E. 2011. Exploring the dynamics of bushmeat hunting and trade in Sapo National Park. Fauna and Flora International, Cambridge, UK.
- Hayashi, K. 2008. Hunting activities in forest camps among the Baka hunter gatherers of south-eastern Cameroon. *African Study Mongraphs* 29: 73-92
- Hickey, L. 2008. Bushmeat consumption in Kinshasa, Democratic Republic of Congo. Analysis at the household level. WCS, New York.
- Hodgkinson, C. 2009. Tourists, gorillas and guns: Integrating conservation and development in the Central African Republic. PhD Thesis University College London.
- Hofmann, T., Ellenberg, T., Roth, H.H. 1999. Bushmeat: A natural resource of the moist forest regions of West Africa with particular consideration of two duiker species in Cote d'Ivoire and Ghana. Deutsche Gesellschaft fur Technische Zusammenarbeit.
- Infield, M., 1988. Hunting, trapping and fishing in villages within and on the periphery of the Korup National Park. WWF Publication 3206/A9.6, Godalming, UK.
- Jeanmart, P. 1998. Tentative d'elaboration d'un plan de gestion de la chasse villageoise dans la reserve de Faune du Dja Programme ECOFAC - Composante Cameroun.
- Juste, J., Fa, J.E., Perez, D.V., Castroviejo, J. 2005. Market Dynamics of Bushmeat Species in Equatorial Guinea. *J. App. Ecol* 32: 454-467
- Keylock, N. 2002. The importance of hunting for bushmeat to a rural community in Equatorial Guinea. Msc thesis. University of London.
- Kumpel, N. F. 2006. Incentives for sustainable hunting of bushmeat in Rio Muni, Equatorial Guinea. PhD Thesis, Imperial College London and Institute of Zoology, London.
- Linder, J.M. 2008. The impact of hunting on primates in Korup National Park: Implications for primate conservation. PhD Thesis. The City University of New York.
- Macdonald, D.W., Johnson, P.J., Albrechtsen, L., Dutton, A., Seymour, S., Dupain, J., Hall, A., Fa, J.E. 2011. Association of body mass with price of bushmeat in Nigeria and Cameroon. *Conserv. Bio* 25:1220-1228
- Mbete, P., Ngokaka, C., Akouango, F., Ntounta, B. and Voudibio, J. 2010. Evaluation des quantites de gibiers prelevees autour du Parc National d'Odzala-Kokoua et leurs impacts sur la degradation de la biodiversite. *J Anim Plant Sci* 8: 1061-1069.

- Mbete, R.A., Banga-Mboko, H., Ngokaka, C., Bouckacka, Q.F., Nganga, I., Hornick, J., Leroy, P., Vermeulen, C. 2011. Profil des vendeurs de viande de chasse et évaluation de la biomasse commercialisée dans les marchés municipaux de Brazzaville, Congo. *Trop. Conserv. Sci.* 4: 203-217.
- Muchaal, P. K., Ngandjui, G. 1999. Impact of village hunting on wildlife populations in the Western Dja Reserve, Cameroon. *Conserv. Bio.* 13: 385 – 396.
- Ntiemoa-Baidu, Y., 1998. Sustainable use of bushmeat. Wildlife development plan 1998–2003, vol. 6. Wildlife Department Accra, Ghana.
- Neale, E., Stiles, D. 2011. Elephant meat trade in Central Africa. Central African Republic case study. IUCN, Gland, Switzerland. 44pp
- Noss, A.J. 1998. Cable snares and bushmeat markets in a Central African rainforest. *Environ. Conserv.* 25:228-233.
- Noss, A.J. 1998. The impacts of cable snare hunting on wildlife population in the forests of the Central African Republic. *Conserv. Bio* 12: 390-398.
- Okorie, P.U., Ekechukwu, K.O. 2004. Bushmeat trade in Amuro-Okagwe, Nigeria. *J Agr Rural Dev Trop.* 5: 187-192.
- Okouyi, V.J.J. 2006. Savoirs locaux et outils modernes cynégétiques: développement de la filière commerciale de viande de brousse à Makokou (Gabon). PhD Thesis University of Orleans.
- Pailler, S., Wagner, J.E., McPeck, J.G., Floyd, D.W. 2009. Identifying conservation opportunities among Malinke bushmeat hunters of Guinea West Africa. *Human Ecol.* 37:761-774.
- Poulsen, J.R., Clark, C.J., Mavah, G., Elkan, R.W. 2009. Bushmeat supply and consumption in a tropical logging concession in Northern Congo. *Conserv Bio* 23: 1597-1608.
- Puit M. 2003. Etude de la commercialisation de la viande de brousse dans la région continentale Rio Muni, Guinée Equatoriale (mémoire). Faculté des sciences agronomiques de Gembloux/ Université de Liège: Liège, 35 p.
- Riddell, M.A. 2011. Hunting and rural livelihoods in northern Republic of Congo: Local outcomes of integrated conservation and development. DPhil thesis. University of Oxford.
- Rist, J., Rowcliffe, M., Cowlshaw, G., Milner-Gulland, E.J. 2008. Evaluating measures of hunting effort in a bushmeat system. *Biol Conserv* 141: 2086-2099.
- Schulte-Herbrüggen, B.J., Rowcliffe, M., Homewood, K., Kurpiers, L., Whitham, C., Cowlshaw, G. 2013. Human ecology wildlife depletion in a West African farm-forest mosaic and the implications for hunting across the landscape. *Human Ecol.* 41: 795-806.
- Starkey, M. 2004. Commerce and subsistence: The hunting, sale and consumption of bushmeat in Gabon. Geography. Cambridge, Cambridge.
- Steel, L. 2008. The Scale and Dynamics of Wildlife Trade Originating in the South of the Salonga-Lukenie-Sankuru Landscape. WWF-Democratic Republic of Congo December 2008.
- Swenson, J. 2005. Bushmeat trade in Techiman, Ghana, West Africa. Undergraduate Thesis. Department of Animal Ecology, Centre for Evolutionary Biology (EBC), Uppsala University, Uppsala, Sweden
- Thibault, M., Blaney, S. 2003. The oil industry as an underlying factor in the bushmeat crisis in Central Africa. *Conserv Bio* 17: 1807-18130
- van Vliet, N., Nebedde, C., Gambalemoke, S. Akaibe, D., Nasi, R. 2012. The bushmeat market in Kisangi, Democratic Republic of Congo: implications for conservation and food security. *Oryx* 46: 196-203.

- van Vliet, N., Nasi, R. 2008. Hunting for livelihood in northeast Gabon: patterns, evolution, and sustainability. *Ecol. Soc.* 13: 33.
- Whitham, C. 2009. Linkages between the strategies and incentives of a hunter: A case study from Ghana. Msc Thesis. Imperial College London. UK.
- Wilcox, A.D., Nambu, D.M. 2007. Wildlife hunting practices and hunting dynamics of the Banyangi and Mbo people of Southwestern Cameroon. *Biol. Conserv* 134: 251-261.
- Wilkie, D. S., Starkey, M., Abernethy, A., Effa, E., Telfer, P., Godoy, R. 2005. Role of prices and wealth in consumer demand for bushmeat in Gabon, Central Africa. *Conserv. Bio* 19: 268-274.
- Wright, J.H. 2010. Hunting and trapping in Lebialem Division, Cameroon: bushmeat harvesting practices and human reliance. *Endanger. Species Res.* 11: 1-12.

Table A.6

Number of samples of each data type at a national level. Country codes as in Table A.5

	Consumption	Market	Offtake
<i>Central</i>			
CMR	2	54	14
CAF	-	2	2
COD	20	26	23
GNQ	3	10	6
GAB	32	34	10
COG	1	7	2
<i>West</i>			
GHA	-	4	6
GIN	-	2	
CIV	-	1	2
LBR	2	-	3
NGA	-	43	-

Table A.7

Full species list of those recorded as either hunted, consumed or sold and their IUCN Red List status (IUCN Red List of Threatened Species, Version 2014.2, www.iucnredlist.org).

	Order	Species	Red list Status
Mammalia	Afrotheriida	<i>Potamogale velox</i>	LC
	Artiodactyla	<i>Phacochoerus africanus</i>	LC
		<i>Phacochoerus africanus</i>	LC
		<i>Hippopotamus amphibius</i>	VU
		<i>Hyemoschus aquaticus</i>	LC
		<i>Redunca arundinum</i>	LC
		<i>Neotragus batesi</i>	LC
		<i>Alcelaphus buselaphus</i>	LC
		<i>Syncerus caffer</i>	LC
		<i>Cephalophus callipygus</i>	LC
		<i>Cephalophus dorsalis</i>	LC
		<i>Kobus ellipsiprymnus</i>	LC
		<i>Hippotragus equinus</i>	LC
		<i>Tragelaphus eurycerus</i>	NT
		<i>Sylvicapra grimmia</i>	LC
		<i>Okapia johnstoni</i>	NT
		<i>Kobus kob</i>	LC
		<i>Cephalophus leucogaster</i>	LC
		<i>Cephalophus maxwelli</i>	N/A
		<i>Hylochoerus meinertzhageni</i>	LC
		<i>Cephalophus monticola</i>	LC
		<i>Cephalophus natalensis</i>	LC
		<i>Cephalophus niger</i>	LC

Order	Species	Red list Status
Carnivora	<i>Cephalophus nigrifrons</i>	LC
	<i>Cephalophus ogilbyi</i>	LC
	<i>Ourebia ourebi</i>	LC
	<i>Potamochoerus porcus</i>	LC
	<i>Neotragus pygmaeus</i>	LC
	<i>Redunca redunca</i>	LC
	<i>Eudorcas rufifrons</i>	N/A
	<i>Cephalophus rufilatus</i>	LC
	<i>Tragelaphus scriptus</i>	LC
	<i>Tragelaphus spekii</i>	LC
	<i>Cephalophus sylvicultor</i>	LC
	<i>Cephalophus zebra</i>	VU
	<i>Canis adustus</i>	LC
	<i>Ichneumia albicauda</i>	LC
	<i>Caracal aurata</i>	NT
	<i>Nandinia binotata</i>	LC
	<i>Mellivora capensis</i>	LC
	<i>Civettictis civetta</i>	LC
	<i>Aonyx congicus</i>	LC
	<i>Crocuta crocuta</i>	LC
	<i>Genetta genetta</i>	LC
	<i>Genetta maculata</i>	LC
	<i>Lutra maculicollis</i>	LC
	<i>Herpestes naso</i>	LC
	<i>Bdeogale nigripes</i>	LC
	<i>Crossarchus obscurus</i>	LC
	<i>Atilax paludinosus</i>	LC
	<i>Panthera pardus</i>	NT
	<i>Crossarchus platycephalus</i>	LC
	<i>Genetta poensis</i>	LC
	<i>Poiana richardsoni</i>	LC
	<i>Herpestes sanguineus</i>	LC
	<i>Leptailurus serval</i>	LC
	<i>Genetta servalina</i>	LC
Proboscidae	<i>Loxodonta africana</i>	VU
	<i>Loxodonta cyclotis</i>	NT
Primata	<i>Chlorocebus aethiops</i>	LC
	<i>Cercocebus agilis</i>	LC
	<i>Lophocebus albigena</i>	LC
	<i>Sciurocheirus alleni</i>	LC
	<i>Colobus angolensis</i>	LC
	<i>Papio anubis</i>	LC
	<i>Cercopithecus ascanius</i>	LC
	<i>Lophocebus aterrimus</i>	NT
	<i>Cercocebus atys</i>	VU
	<i>Procolobus badius</i>	EN
	<i>Arctocebus calabarensis</i>	LC
	<i>Cercopithecus campbelli</i>	LC

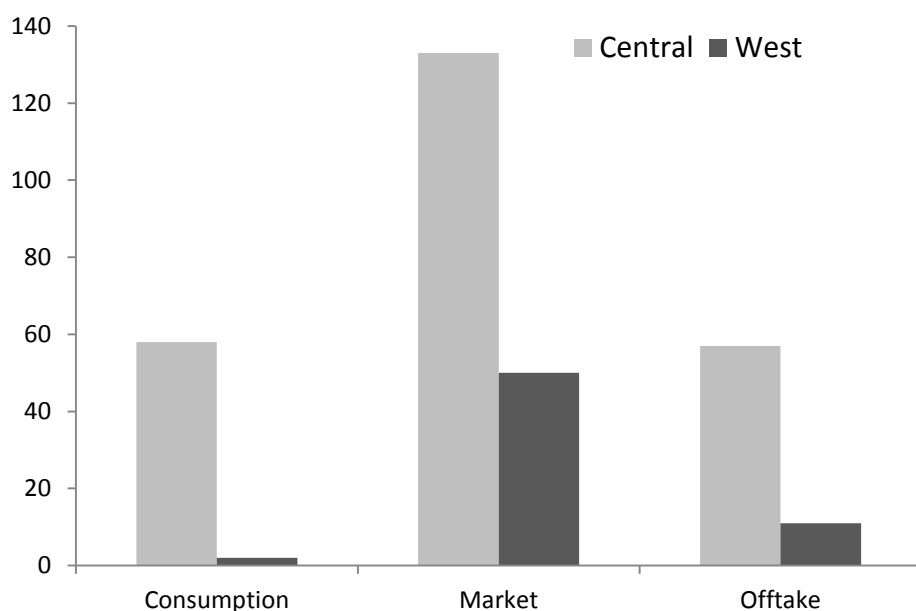
Order	Species	Red list Status
	<i>Cercopithecus cephus</i>	LC
	<i>Cercocebus chrysogaster</i>	DD
	<i>Cercopithecus diana</i>	VU
	<i>Cercopithecus dryas</i>	CR
	<i>Euoticus elegantulus</i>	LC
	<i>Cercopithecus erythrogaster</i>	VU
	<i>Cercopithecus erythrotis</i>	VU
	<i>Gorilla gorilla</i>	CR
	<i>Colobus guereza</i>	LC
	<i>Papio papio</i>	NT
	<i>Cercopithecus hamlyni</i>	VU
	<i>Mandrillus leucophaeus</i>	EN
	<i>Cercopithecus mona</i>	LC
	<i>Cercopithecus neglectus</i>	LC
	<i>Cercopithecus nictitans</i>	LC
	<i>Allenopithecus nigroviridis</i>	LC
	<i>Miopithecus ogouensis</i>	LC
	<i>Pan paniscus</i>	EN
	<i>Erythrocebus patas</i>	LC
	<i>Procolobus pennantii</i>	CR
	<i>Cercopithecus petaurista</i>	LC
	<i>Cercopithecus pogonias</i>	LC
	<i>Colobus polykomos</i>	VU
	<i>Perodicticus potto</i>	LC
	<i>Procolobus preussi</i>	CR
	<i>Cercopithecus preussi</i>	EN
	<i>Chlorocebus sabaeus</i>	LC
	<i>Colobus satanas</i>	VU
	<i>Cercopithecus solatus</i>	VU
	<i>Mandrillus sphinx</i>	VU
	<i>Miopithecus talapoin</i>	LC
	<i>Procolobus tholloni</i>	N/A
	<i>Cercocebus torquatus</i>	VU
	<i>Pan troglodytes</i>	EN
	<i>Procolobus verus</i>	NT
	<i>Cercopithecus wolffi</i>	N/A
Chiroptera	<i>Eidolon helvum</i>	NT
Hyracoidea	<i>Dendrohyrax dorsalis</i>	LC
Lagomorpha	<i>Poelagus marjorita</i>	LC
	<i>Lepus microtis</i>	LC
Pholidota	<i>Smutsia gigantea</i>	NT
	<i>Uromanis tetradactyla</i>	N/A
	<i>Phataginus tricuspis</i>	NT
Sirenia	<i>Trichechus senegalensis</i>	VU
Tubilidentata	<i>Orycteropus afer</i>	LC
Rodentia	<i>Atherurus africanus</i>	LC
	<i>Anomalurus beecrofti</i>	LC
	<i>Hystrix cristata</i>	LC

	Order	Species	Red list Status
Aves		<i>Anomalurus</i>	<i>derbianus</i> LC
		<i>Epixerus</i>	<i>ebii</i> LC
		<i>Cricetomys</i>	<i>emini</i> LC
		<i>Xerus</i>	<i>erythropus</i> LC
		<i>Cricetomys</i>	<i>gambianus</i> LC
		<i>Funisciurus</i>	<i>isabella</i> LC
		<i>Funisciurus</i>	<i>leucogenys</i> LC
		<i>Anomalurus</i>	<i>Pelii</i> DD
		<i>Paraxerus</i>	<i>poensis</i> DD
		<i>Myosciurus</i>	<i>pumilio</i> LC
		<i>Heliosciurus</i>	<i>rufobrachium</i> LC
		<i>Protoxerus</i>	<i>stangeri</i> LC
		<i>Thryonomys</i>	<i>swinderianus</i> LC
	Anseriformes	<i>Pteronetta</i>	<i>hartlaubii</i> LC
	Columbiformes	<i>Treron</i>	<i>calvus</i> LC
		<i>Columba</i>	<i>unicincta</i> LC
	Coraciiformes	<i>Ceratogymna</i>	<i>atrata</i> LC
		<i>Tockus</i>	<i>camurus</i> LC
		<i>Bycanistes</i>	<i>fistulator</i> LC
		<i>Ceryle</i>	<i>rudis</i> LC
	Cuculiformes	<i>Corythaeola</i>	<i>cristata</i> LC
		<i>Tauraco</i>	<i>persa</i> LC
	Falconiformes	<i>Gypohierax</i>	<i>angolensis</i> LC
		<i>Stephanoaetus</i>	<i>coronatus</i> NT
		<i>Accipiter</i>	<i>tachiro</i> LC
		<i>Haliaeetus</i>	<i>vocifer</i> LC
	Galliformes	<i>Afropavo</i>	<i>congensis</i> VU
		<i>Guttera</i>	<i>edouardi</i> N/A
		<i>Numida</i>	<i>meleagris</i> LC
		<i>Agelastes</i>	<i>niger</i> LC
		<i>Guttera</i>	<i>plumifera</i> LC
		<i>Guttera</i>	<i>pucherani</i> LC
		<i>Pternistis</i>	<i>squamatus</i> N/A
	Gruiformes	<i>Himantornis</i>	<i>haematopus</i> LC
	Pelecaniformes	<i>Pelecanus</i>	<i>rufescens</i> LC
	Psittaciformes	<i>Psittacus</i>	<i>erithacus</i> VU
		<i>Poicephalus</i>	<i>gulielmi</i> LC
Reptilia	Crocodylia	<i>Crocodylus</i>	<i>cataphractus</i> DD
		<i>Crocodylus</i>	<i>niloticus</i> NT
		<i>Osteolaemus</i>	<i>tetraspis</i> VU
	Squamata	<i>Trioceros</i>	<i>cristatus</i> LC
		<i>Bitis</i>	<i>gabonica</i> N/A
		<i>Dendroaspis</i>	<i>jamesoni</i> N/A
		<i>Naja</i>	<i>melanoleuca</i> N/A
		<i>Bitis</i>	<i>nasicornis</i> N/A
		<i>Naja</i>	<i>nigricollis</i> N/A
		<i>Varanus</i>	<i>niloticus</i> N/A
		<i>Python</i>	<i>sebae</i> N/A

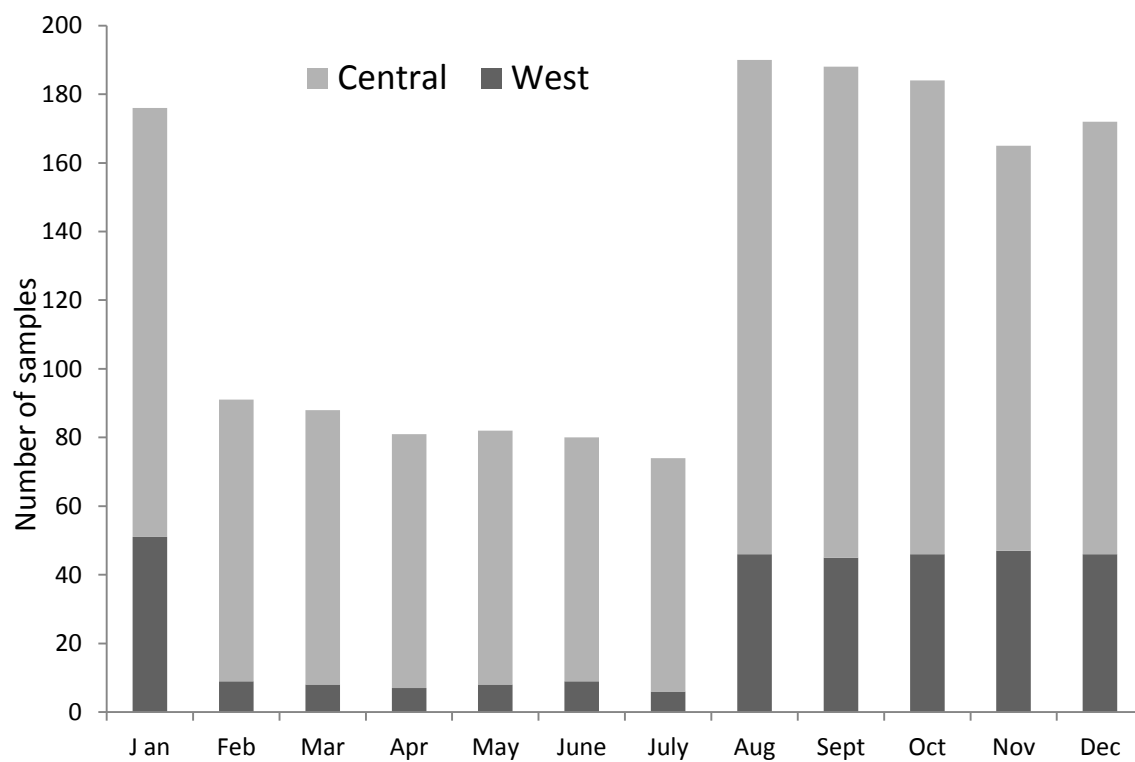
	Order	Species		Red list Status
	Testudines	<i>Dermochelys</i>	<i>coriacea</i>	CR
		<i>Kinixys</i>	<i>erosa</i>	DD
		<i>Eretmochelys</i>	<i>imbricata</i>	CR
		<i>Chelonia</i>	<i>mydas</i>	EN
		<i>Lepidochelys</i>	<i>olivacea</i>	VU
		<i>Pelomedusa</i>	<i>subrufa</i>	N/A
		<i>Trionyx</i>	<i>triunguis</i>	N/A
		<i>Conraua</i>	<i>goliath</i>	EN
Amphibia	Anura			

N/A – Not assessed, DD – Data Deficient, LC – Least Concern, VU – Vulnerable, EN – Endangered, CR – Critically Endangered.

Supplementary Figures



Supplementary Figure A.1. Number of samples for the 3 data types, consumption, market and offtake, for West and Central Africa.



Supplementary Figure A.2. Number of samples collected per month for West and Central Africa.

Supplementary acknowledgements

Norwegian Research Council

WCS small grants for Africa

Brandenburg University of Technology Cottbus Germany

Darwin Initiative for support of data gathering in the Sanaga Cross region of Cameroon and Nigeria